

ST. ANTHONY CHURCH

HELENA



75th JUBILEE

1910 - 1985

**1985 DIRECTORY OF
ST. ANTHONY CHURCH
8233 HELENA ROAD
HARBOR BEACH, MICHIGAN 48441
(517) 479-6781**

THE FIRST SEVENTY-FIVE YEARS

When the glaciers melted following the ice age, they left a peninsula of land extending into the lake, which we know as the Thumb. For centuries the Indians survived and left us with relics. Arrowheads and stone tools can still be found.

In the early 1800's white settlers began building along the shoreline and near the mouth of streams. By 1850 English settlers began inhabiting the higher, sandy ground between Elm Creek and Rock Falls. These English pioneers had good horses, quality cattle and hardy sheep but were better shepherds than farmers. They also believed in morality and a need for knowledge so they soon established churches and government schools.

About 1870, John Snowden built a log blacksmith shop and trading post on the White Rock to Verona trail, slightly south and west of the present Helena. He called it "The Helena Trading Post."

In 1873 the Port Huron and North Western railroad company built a narrow gauge railroad to service the J. Jenks and Co. firm of Sand Beach. Shortly after the great fire of 1881 the railroad was sold to Flint and Pere Marquette Co. Fortunately, because of the swampy land to the west, the area escaped the brunt of the great fire.

Shortly after the fire, a Mr. McNames built a brick store next to the railroad tracks which became a United States Post Office in 1888. In 1890 Thomas and Hannah Weir leased land to the Helena Congregational Church at the southwest corner of the intersection of Klug and Helena Roads. One of the first trustees was John Snowden, who owned the trading



First Helena School
1890

post. Two other trustees were Hamilton Utley and Alexander Sumerville. In 1892 the railroad, which was now the Pere Marquette, purchased land from Mr. Landra to put in a siding and stockyard at Helena to better serve the area. Thomas and Hannah Weir were now managing the post office and store. Several trains ran each day and passengers were picked up at the store as well as mail and produce. There was an outside passageway and platform level with the train doors to make it convenient for passengers and loading freight.



Indian Relics



The Weir Family
1890

In 1894, the Helena Tent of Maccabees leased a parcel of land from the Weirs to use as a site where they conducted their meetings. They erected a small building on the land which is now part of the St. Anthony parking lot. In 1900 the railroad was upgraded to a wide gauge tract which it remains to this day.

In 1903, Henry Gilbert leased land to the Second Baptist Church on the northeast corner of the intersection of Klug and Helena roads. This congregation was served by the minister from Harbor Beach.

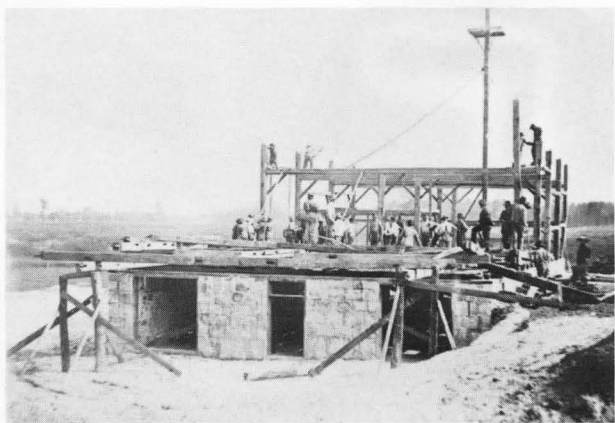
In 1905, the Weirs leased a parcel of land to The Ancient Order of Gleaners, located next to the

Maccabees, where the Gleaners built a large hall. This property now is part of the parking lot of St. Anthony's Parish.

In 1906, with the beginning of Rural Free Delivery, the Helena Post Office was closed. In 1912, George Groll built a general store west of the former post office, where he traded in cattle and produce.

During the latter part of the 1800's, the English and Scottish settlers kept expanding, farming the higher ground, mostly east and north of Helena. As the English were getting established, word began filtering back to the German, Dutch and Polish settlements in Detroit and Cleveland, Ohio, of the swamp-land south and west of Helena. These people knew by the mighty oak growing there, the land was fertile. Having come from the low countries bordering the Baltic Sea, they knew how to drain and farm that type of soil. They began to clear and drain the land and establish homesteads in the area. These people were mostly of the Catholic faith and had to travel either to Ruth or Harbor Beach to worship. This meant they had to cross either the Rock Falls or Elm Creek. The steep hills were difficult for horses to climb, especially in winter. Among those settling in the area were Peter Kranz and Franklin Schroeder, of Detroit, who bought land on opposite sides of the railroad tracks just south of Helena. Mr. Kranz knew Bishop John Foley of Detroit, and was instrumental in organizing a group of people to petition the Detroit Diocese to establish a parish. He is generally credited with successfully persuading the bishop of the need of a parish and the dedication to support it. He also kept harmony among the many factions. Mr. Kranz made many trips to Detroit by train both during the organizing and beginning of the parish to work out problems.

In November, 1909, a small parcel of land was purchased from Joseph and Carey Landra, west of the Tent of Maccabees. After several meetings it was



Barn Raising Bee
1900



Father Anthony Strauss

decided the new church would be a cement block structure. There was a lot of sentiment to build a frame structure, timbers were plentiful, but the two great fires were still uppermost in the minds of the people. Plans were made to begin construction in the spring of 1910. Bishop Foley assigned Father Anthony Strauss the first pastor on July 10, 1910. At first he stayed at the Peter Kranz home and said Mass in the Gleaner Hall. Soon after, the parish rented a home from Michael Ebach, east of Helena. Father Strauss was young and enthusiastic and so well liked that eventually the parish picked the name "St. Anthony" in his honor. The cement blocks were

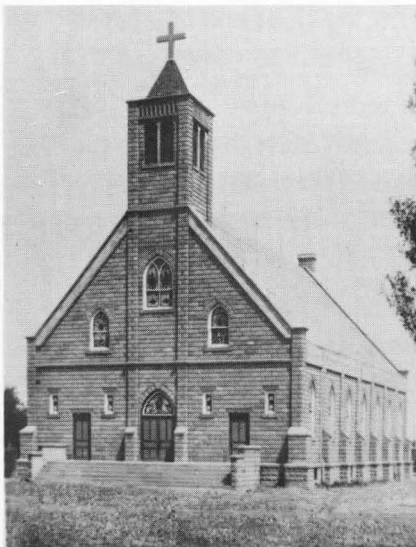
manufactured on the site in a cement block machine owned by a Mr. Wehner. Excellent quality gravel donated by Joseph Roggenbuck was hauled by the parishioners from the pit one and a half miles north of the church. Many horse drawn wagon loads were needed to make the blocks. The contractor was Mr. Henry Kranz. The parishioners donated many hours of hard labor hoisting the block and mortar seventy feet in the air. How the cement pillars were erected for the bell tower still amazes us. During the winter of 1910-1911, the pews were made in a small shop owned by Gus Pikron. Mr. John Kramer, along with John and Joseph Booms, built the pews, almost entirely, with hand labor. They also built the communion railing. In the summer of 1911, a 38 inch brass bell, cast in Baltimore, Maryland, with a 65 inch balance wheel was hoisted into the tower by manpower, thus completing the building. The bell bears the inscription:

The cost of the completed church was approximately \$10,000.

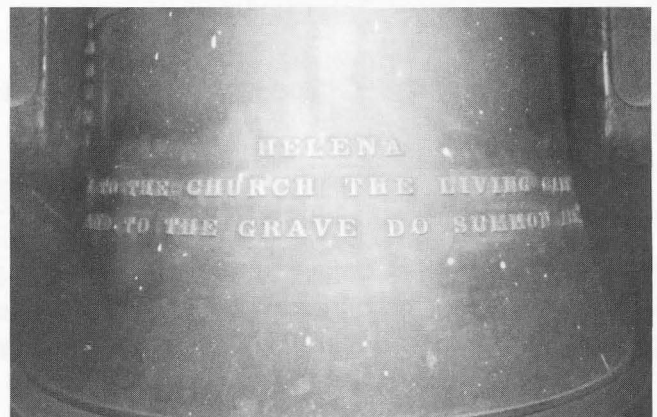
"I TO THE CHURCH THE LIVING CALL
AND TO THE GRAVE DO SUMMON ALL."

The petition, first gathered by Mr. Kranz, indicating a desire to form a new parish, contained the names of about 70 families. By the time it was completed there remained approximately fifty families. Some people couldn't break ties with their present parish, some felt it was too big a financial undertaking, while still others were disturbed over things that happened during the organizing process.

The first recorded baptism was that of Leroy Booms, July, 31, 1910. The first recorded wedding was that of Fred Terbrack and Ida Wolschlager on November 16, 1910.



New Church
1911



The first Communion class was in the summer of 1911. The class was also confirmed at the time of the church dedication. The first Mass celebrated in the new church was on Easter Sunday, 1911. The church was dedicated by Auxiliary Bishop Edward Kelly on July 19, 1911.

The parishioners began building sheds for their teams behind the church soon after the church was completed. A cemetery was started on the Albert Mausolf farm, located on the Klug Road. It was a sandy knoll and the leveling was done mostly by hand. The cemetery was later moved to its present location, overlooking Lake Huron, in the fall of 1935.

Father Strauss used the Gleaner Hall to teach religion to the youth on Saturday mornings as well as during the summer.

Among the first organists were Rose Dropeski, Cecelia Ebach and Helena Kranz. Some of the early janitors were George Groll, Ben Mausolf, Ed Schroeder and the John Kramer family. The Ben Landra family rang the Angelus bell three times daily.

The new parish wasn't long without tragedy as Father Anthony Strauss was forced to leave because of ill health in early 1912. He died a short while later. He was replaced by his uncle, Father Joseph Strauss, whose stay was also very brief. He served until September 10, 1913. From September 10, 1913 until August 1, 1914 the parish was attended by Sts. Peter and Paul parish of Ruth. In late 1914, with Father Francis Broegger as pastor, the parish purchased more land from the Landra family on which to build a rectory. It was completed in 1915 at a cost of \$1100.

After completing the rectory, the parish began the task of paying off the debt and nourishing the faith. With the beginning of World War I, the parish saw some of its sons called into service. Although they were tested in battle, none had to make the supreme sacrifice.

On May 1, 1919, Father J. Frank Malin was assigned to serve the people of St. Anthony's parish. He also had health problems and eventually in 1925 was unable to continue. The parish was without a pastor for four months until Father D. F. Forster was assigned. Cars were becoming popular and the pastor began traveling to the rural schools to teach religion after regular school hours. An electric plant was purchased to give light.

In 1927, a tornado ripped through the area, destroying much property and damaging the church. It also twisted the Gleaner Hall from its foundation.

Father G. E. Plank was placed in charge of the parish on October 27, 1928. He was succeeded by Father James Fitzpatrick on October 15, 1933.

During the dark days of the depression, the parish struggled to hold its own. As the economy started to recover, the parish began making improvements. After the Gleaner Hall was severely damaged, it was dismantled and the land reverted back to the Weir farm, which was now owned by Arthur



First
"First Communion Class" of New Parish

and Annebelle Weir. They in turn, donated it to the parish, where a parish hall was built in 1935, this being the 25th anniversary of the parish. The present garage was built about the same time. With the hall being available, the parish had more social events. The profits from chicken dinners served and bazaars helped to pay off the parish debt. In addition, beef dinners and fish fries were also served. Feather parties, dancing and card parties were likewise enjoyed.

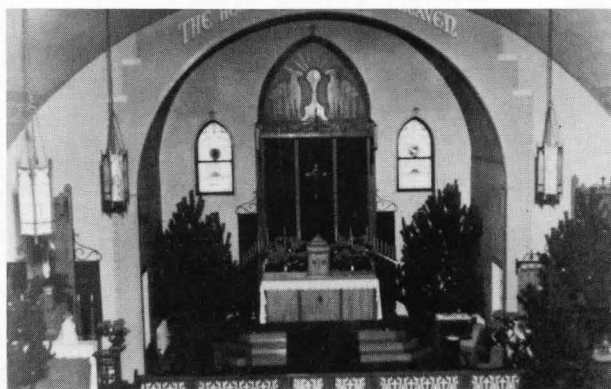
In March, 1936, Father Charles A. Roark was assigned pastor. He was instrumental in obtaining the Dominican Nuns to come from Ruth to teach religion to the youth. In 1938, St. Anthony's parish became a part of the Saginaw Dioceses. In 1939, Mr. and Mrs. Weir donated to the parish the property that had reverted back to them from the Helena Tent of Maccabees. This was located between the church and the hall. In the late 1930's, the horse sheds were dismantled and that area was made into a softball diamond. Helena has had many outstanding softball teams over the years.

As numbers go, the parish membership peaked about 1940 with about 90 families just before World War II. In June, 1940, Father George Flannigan was assigned pastor. The dark clouds of war were already visible when he began his tenure. Several of the sons of the parish were called to serve. Many were scarred in battle and Earl Landra made the supreme sacrifice. After the war when things began to return to normal, the trend to bigger equipment and bigger farms was beginning and the parish began to have fewer families. Father Flannigan worked hard to upgrade the choir and the worship services. During the summer of 1949, the church interior was redecorated. New altars were installed, as well as new chandeliers and stations. The chandeliers and stations are still in use today. In 1951, Father Michael H. Wolf was assigned pastor. During his tenure, perma stone was installed on the church exterior.

In 1953 Father Joseph O'Rourke became the pastor. This young priest was very concerned about the necessity of educating the youth in both spirituality and general knowledge. Through his effort and leadership, the parish family purchased land from Mr. and Mrs. Anthony Stacer and Charles Weir adjacent to the property on which a school and convent building were erected in 1957-1958. Father was instrumental in obtaining the Dominican order of nuns from



Father George Flannigan



Church Interior
1949



Father
Joseph O'Rourke



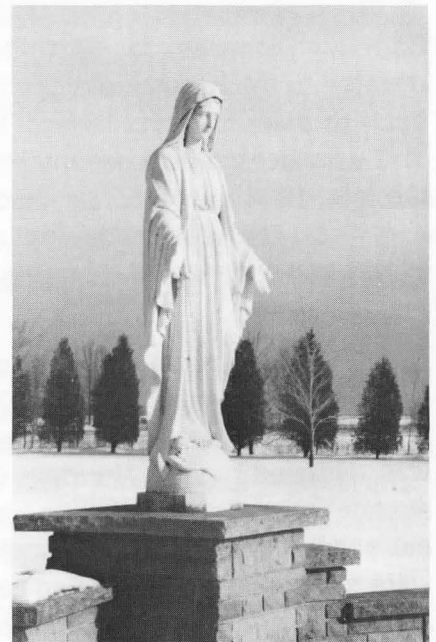
Basketball Team

Adrian, Michigan, to furnish teachers. The four rooms, eight grade school opened its doors in September, 1958, with an enrollment of 104 pupils. It was dedicated by Bishop Stephen Woznicki on October 26, 1958. The school building cost approximately \$60,000. A school bus was purchased and driven by Anthony Stacer and Charles Weir.

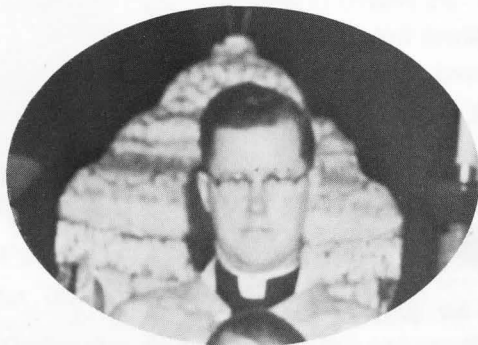
The Youth Club of the parish built an outdoor shrine to Our Blessed Mother in 1956. The roses enhancing the shrine have been cared for by the Holdwick family ever since.

The community lost a devoted citizen with the untimely death of Father O'Rourke on April 21, 1960. It was at this time the rectory was undergoing a major remodeling. Soon after, Father John Rushman was installed as pastor. He was an able administrator, keeping the parish and school operating smoothly. Father had a special interest in the cemetery and did a lot to make our cemetery one to cherish. During his tenure, the mechanical bell ringer was installed along with new pews. A new communion railing, built by Jim Holdwick, was also added.

Father Terrance Yule was assigned the pastor in June, 1966. With the changes of Vatican II becoming effective, Father formed the parish council. Also with the change of the role of nuns, the Dominican order was no longer able to supply three teachers. However, we were fortunate to be able to retain two nuns. The parish was too small to hire lay teachers, so a merger was worked out with Our Lady of Lake Huron school in an attempt to keep Catholic education available. Grades one thru four were taught at St. Anthony's and five thru eight were taught at Our Lady of Lake Huron. Since the parish shared a joint school program



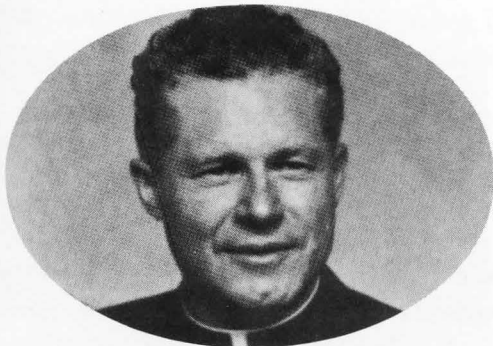
Shrine



Father
John Rushman



Father
Terrance Yule



Father
Bela Torok



Father
Walter Eckert

ish hall was sold and removed from the premises. The school was then changed to meet the needs of a parish center. When Father Eckert's health began to fail in 1975, another Benedictine priest, Father Edward Yatsko replaced him. Father Yatsko was forced to retire in April, 1978, also due to ill health.

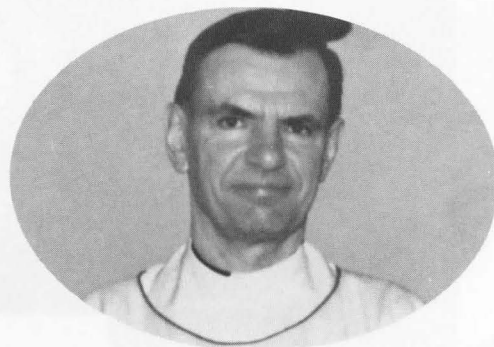
Father Edward Trombley was appointed pastor and served the people with dedication until August, 1979 when Father R. K. LeFleur was assigned pastor. Previously, Father LeFleur spent several years teaching in the States, as well as in Ethiopia. He brought with him a wealth of knowledge of the Scriptures as well as Catholic Doctrine. He also has a keen insight to the necessity of a parish being a faith community serving each other's needs.

with Our Lady of Lake Huron parish, Father Bela Torok pastor of Our Lady of Lake Huron, was appointed administrator of St. Anthony's in January, 1970. Father Torok and his assistant pastor, Father Walter Eckert, of the Benedictine order, served the parish until 1971 when Father Eckert was then appointed pastor. Under the direction of Father Torok the interior of the church was repainted and carpeted in 1970.

With the closing of Our Lady of Lake Huron High School in 1971, it became impractical to have a divided elementary school. Thus it was decided to close St. Anthony's school in the spring of 1971. Just before the school closed, the parish was saddened by the untimely death of one of the nuns, Sister Claudia, in a car accident. The parish has continued to subsidize Our Lady of Lake Huron school for the Catholic education of its youth. A religious education program for those not attending Our Lady of Lake Huron school, as well as high school students, continues to be offered. Many devoted people have labored in this program. Father Eckert's devotion, derived from the Scriptures, has left an indelible mark on his congregation. After the school closed, the par-



Father
Edward Yatsko



Father
Edward Trombley

In preparation for our jubilee year, the parish developed a five year church maintenance plan, which included re-anchoring the perma-stone on the church exterior, a new church roof, interior redeco-rating and new carpeting.

Throughout the years the parish family has enjoyed preparing and serving a traditional German dinner. Making the sausage, and serving the many patrons requires the co-operation of each parishioner. This annual dinner has been a tradition for 25 years.

As we begin the jubilee year, like the rest of mankind, we continue to search for the meaning of life. We are reminded of its fragility by the passing of our two oldest members, Mary Kranz and Joey Vogel, early in 1985.

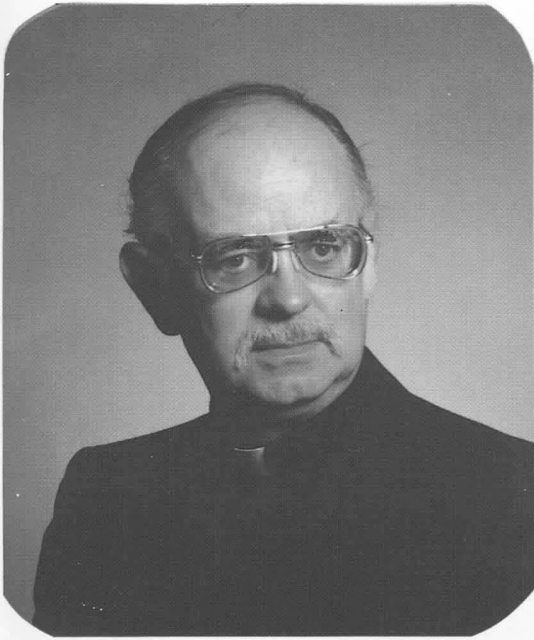
The enthusiasm of youth, the dedication of devoted parents raising their families, the accomplish-ments and contributions of the senior members of our parish, should not be passed over without notice. The fact that many of the original family names remain today helps us to realize this is a faith community where we help each other in our sorrow and celebrate our joys together. We as a parish are ever grateful for the many dedicated pastors and nuns that have served us over the past 75 years. Each has left us a different heritage. All made the community a better place to live. Since it is not possible to adequately cover all the individual efforts, let us who are living the present, try to be as dedicated to religion, morality and knowledge as the pioneer settlers of Helena once were. We can be justly proud of the contributions of those who have labored before us.

.....

A note of appreciation from the pastor.

The Jubilee Committee was co-chaired by W. Holdwick and E. Volmering, and assisted by R. Hessling, Parish Council President, F. Mausolf and B. Roggenbuck. A number of subcommittees provided an enormous amount of support in order to produce this Jubilee book, arrange for the Parish Picnic and Homecoming, and plan for the anniversary Mass and Dinner. These efforts are characteristic of the deep commitment the people of St. Anthony have for their Parish.





Father R. K. LeFleur

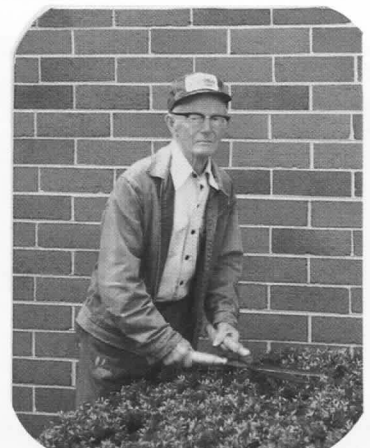
“Greatly to be revered is God in his sanctuary; he . . . gives power and strength to his people. Blessed be God!” (Ps. 68) How grateful you should be that your forefathers were urged by faith to provide a sanctuary where they might gather to praise God, to hear his Word, to sanctify the significant events in their lives. And from this faith, nourished in this sanctuary, they would derive the power to live lives of Christian service and the strength to be faithful to the beliefs and traditions of their fathers. As you observe this Jubilee may you be determined to do the same. Indeed this is an occasion when all should devoutly and gratefully proclaim, “Blessed be God!”



Pauline Booms - Secretary

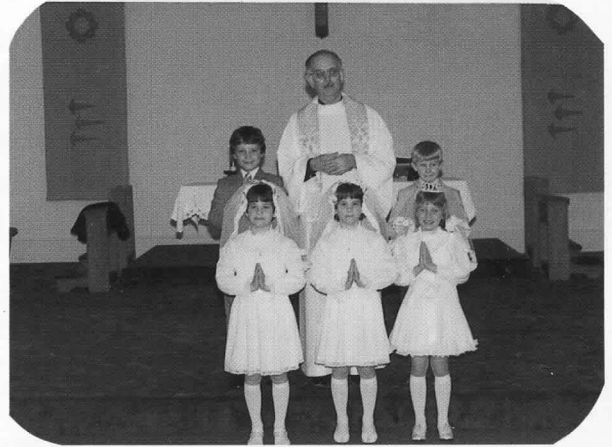
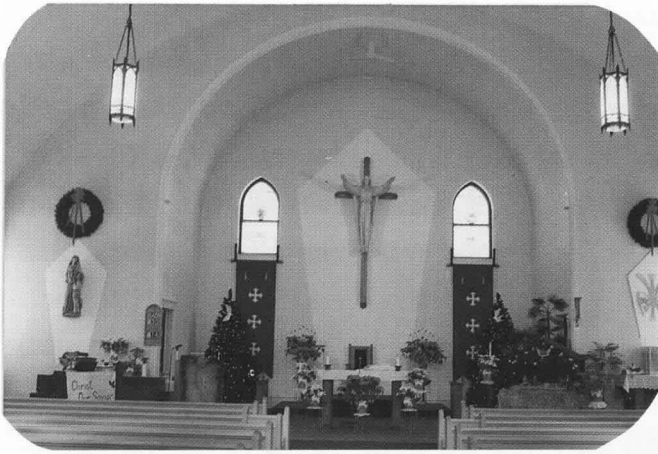


Parish Council



Norman Holdwick
Caretaker

A TIME TO WORSHIP



Some Ministers of
the Eucharist



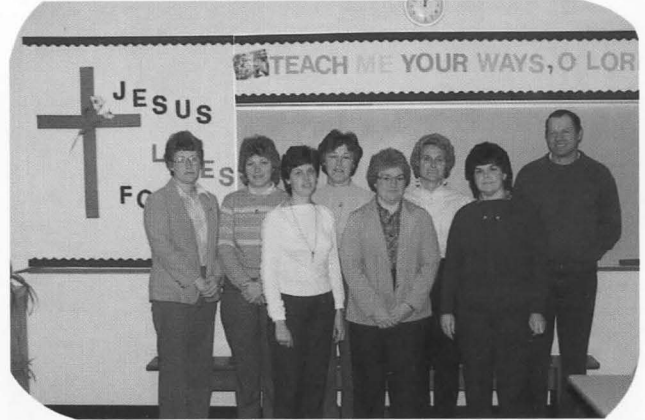
A TIME TO TEACH



Christmas Entertainment for
Religion Class



Bishop Untener & Staff



Our Dedicated Teachers



Confirmation Class

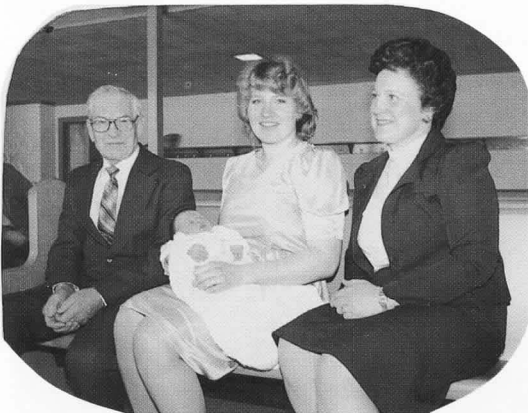


Religion Coordinators



Married 50 years – Plus!

A TIME FOR REMEMBERING



Great Grandfather - LeRoy
Grandmother - Eileen
Mother - Nancy – Daughter - Alicia



LeRoy Booms - 1st Baptism 1910
Alicia Laeder - Great Granddaughter
1st Baptized in Jubilee Year 1985

A TIME FOR GATHERING





A TIME TO SING

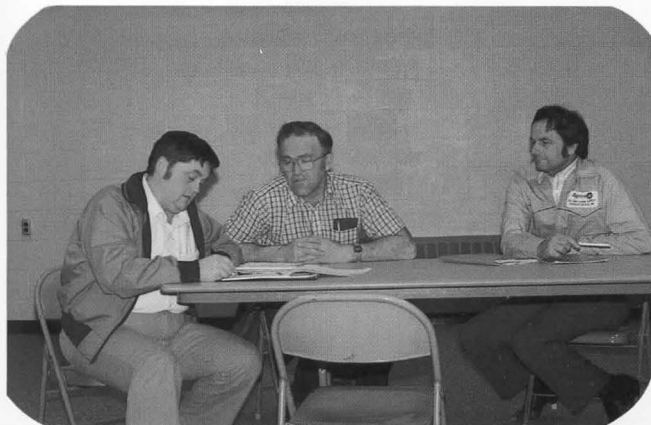


Youth Choir



Adult Choir

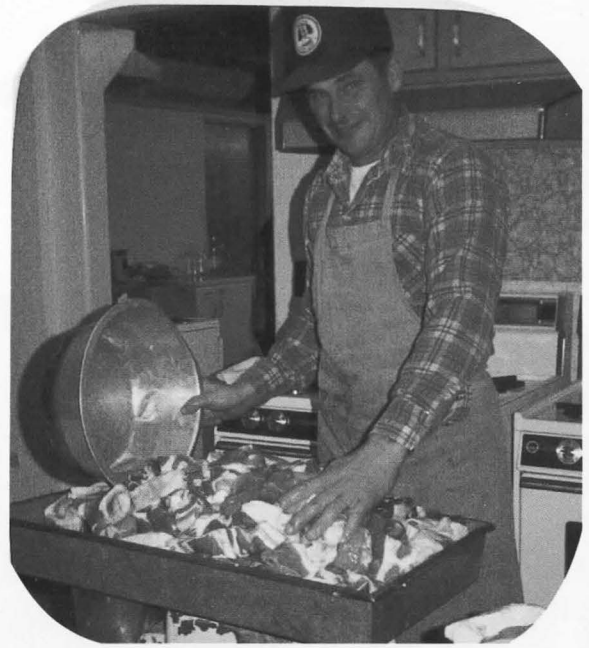
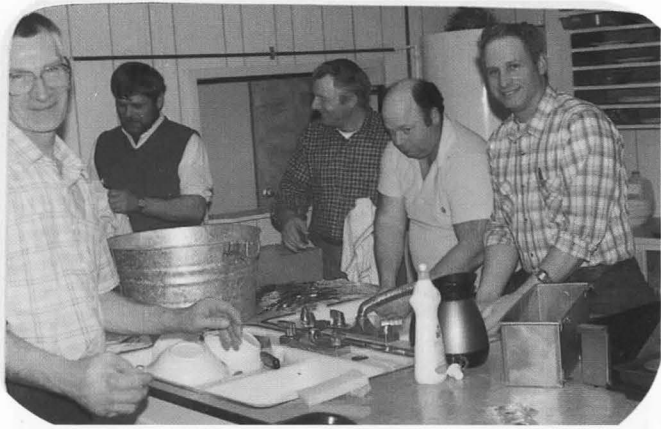
A TIME TO WORK



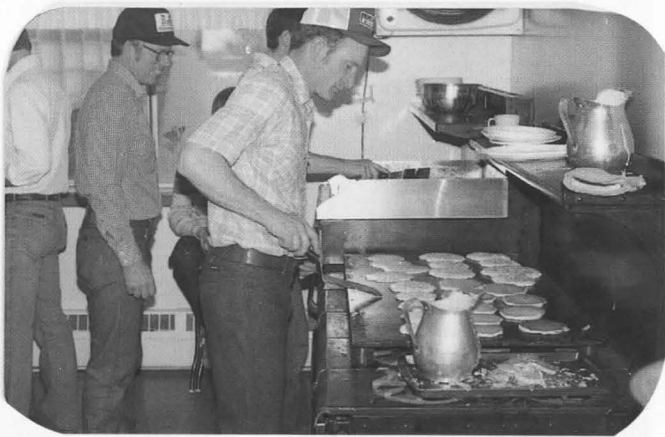
Men's Club Officers



Altar Society Officers



Sausage Preparation



Pancake Breakfast

**THERE IS A
TIME FOR**

**E
V
E
R
Y
T
H
I
N
G**





*The Families of the
Congregation*



**Donald & Sharon Amey,
Christopher & Jennifer**



**Charles & Doris Bischer,
Lloyd & Daniel**



Nancy & Pauline Bischer



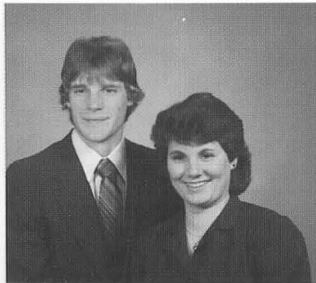
Allen & Dorothy Booms



Anthony Booms



Arthur Booms



Benedict & Judy Booms



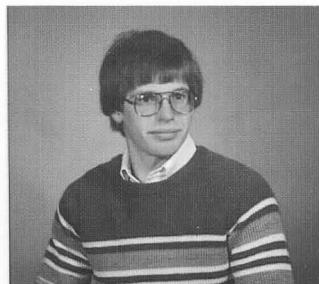
**Carl & Marjorie Booms,
Kevin, Karen & Kurt**



**Daniel & Marge Booms
& Family**



**Earl & Beatrice Booms
& Family**



Edward Booms



**Gene & Emily Booms,
Nadine, Janette, Eric & Leah**



**Harry & Verna Booms,
Holly, Matthew, Rebecca & Darryl**



Leonard & Rita Booms



LeRoy & Helen Booms



**Marvin & Virginia Booms
& Family**



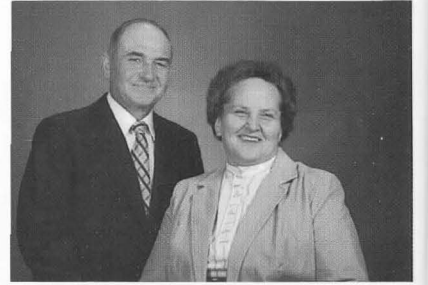
**Paul & Shirley Booms,
Julie, Jeff, Jill, Janice & John**



**Ronald & Pauline Booms,
Julie, Kathy & Harvey**



Wilfred & Estella Booms



Orville & Patricia Braun



**Delbert & Gloria Conquergood,
Richard, Marci & Wade**



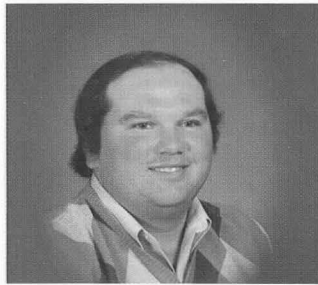
**Robert & Arlene Emming,
Dean & Dale**



**Walter & Bernice Endres
& Larry**



George & Agnes Essenmacher



Daniel Geiger



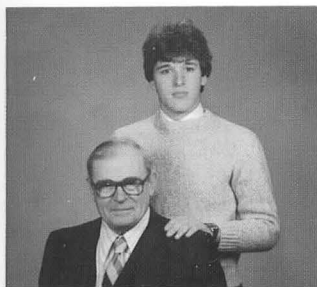
George & Selma Geiger



Leo & Lucille Geiger



**Ronald & Doreen Genis,
Robert, Rebecca & Ryan**



**Elmer Hessling
& Steve**



**Kevin & Louise Hessling,
Chad, Jordan & Nicole**



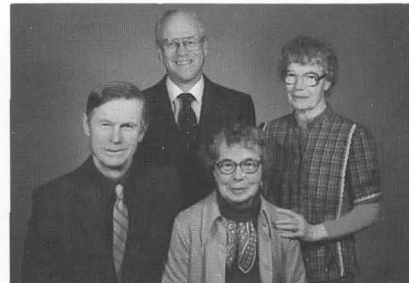
**Richard & Nancy Hessling,
Jill, Karen, Beth & Eric**



**Edward & Marie Holdwick,
Laura, Todd, Bridget & Chad**



**Erwin & Dorothy Holdwick,
Paula & Wendy**



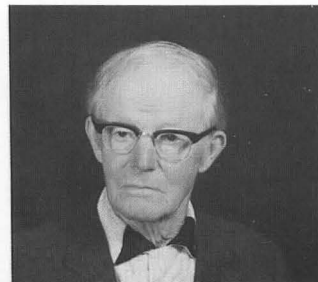
**Harry & Beatrice Holdwick,
Margaret & James**



**Larry & Frances Holdwick,
Scott & Sara**



Marie Holdwick



Norman Holdwick



**Paul & Mary Ann Holdwick,
Corinne, Jeffrey, Connie & Jason**



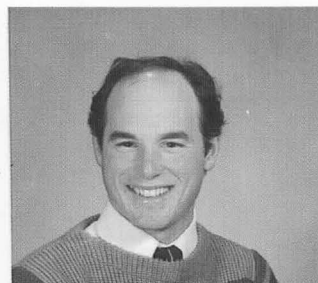
Stella Holdwick



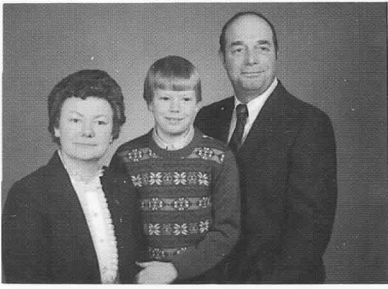
**William & Audrey Holdwick,
Tammy, Eric, Kevin, Greg & Keith**



Wilbert & Margaret Kirsch



Claire Kramer



**David & Janet Kramer
& Darrin**



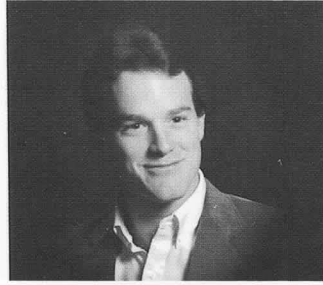
**James & Stella Kramer,
Sharon & Michael**



**Marvin & Janet Kramer
& Family**



Melvin Kramer



Paul Kramer



Raymond & Stella Kramer



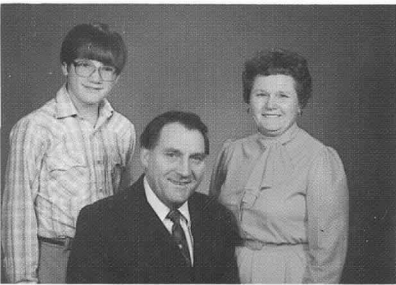
Colleen Kranz



Dennis & Mary Lou Kranz



Edward & Agnes Kranz



**Lawrence & Dolores Kranz
& Greg**



Neal & Nancy Laeder



Arthur & Evelyn Learman



**John & Ilene Learman
& Family**



Susie Lemanski



Earl & Frances Mausolf



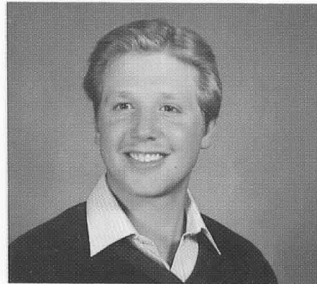
**James & Linda Mausolf,
Angeline & Sara**



Jerome & Alice Mausolf



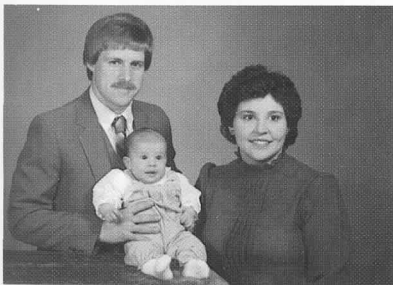
Leolla Mausolf



Paul Mausolf



Robert & Betty Mausolf



**Wayne & Mary Mausolf
& Erinn**



**William & Deanna Mausolf,
Daniel, Michael & Tracy**



Bernard & Rosaline Messing



Laurretta Messing



Robert & Catherine Messing



Stanley & Rose Peruski



Joseph & June Priemer



Barthol & Geraldine Roggenbuck



Clara Roggenbuck



**Dorothy Roggenbuck
& Lynn**



George & Charlene Roggenbuck



**Glenn & Barbara Roggenbuck,
Carmen, Greg, Pamela & Paulette**



**Harry & Rochelle Roggenbuck,
Brian, Leon & Dean**



**John & Linda Roggenbuck
& Family**



Magdalene Roggenbuck



Mark Roggenbuck



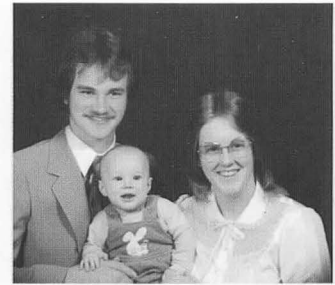
**Michael & Patricia Roggenbuck
& Family**



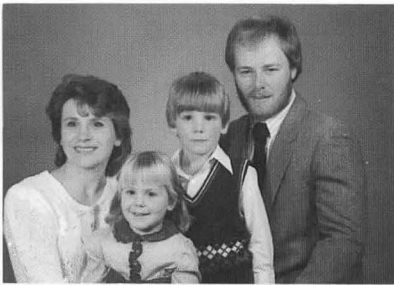
**Robert & Linda Roggenbuck
& Family**



Ronald Roggenbuck



**Scott & Cindy Roggenbuck
& Aaron**



**Terry & Bernadette Roggenbuck,
Ryan & Andrea**



**William & Rosemary Roggenbuck
& Family**



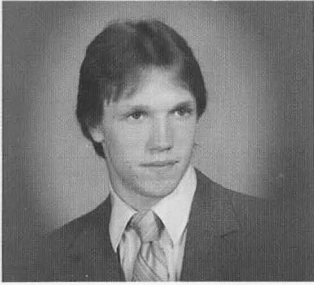
Dennis Schroeder



Elmer & Dorothy Schroeder



Bernard & Beatrice Siemen



Dale Siemen



Jeannette Siemen



**Larry & Bonnie Siemen
& Family**



Leonard & Catherine Siemen



**Lillian Siemen,
Julie, Brian & Kurt**



Richard Siemen



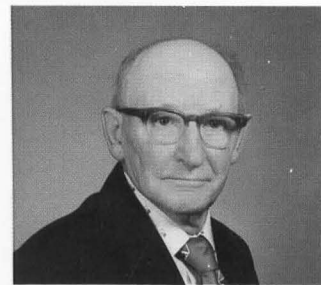
Robert & Geraldine Siemen



**Ronald & Clarice Siemen
& Family**



**Calvin & Judy Stacer,
Paul, Thomas & Scott**



John Stacer



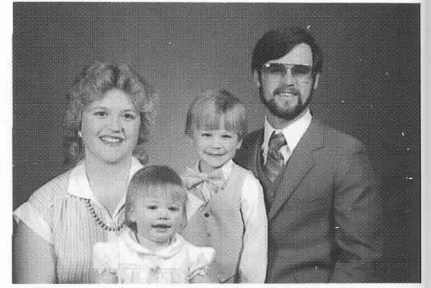
**Linus & Marilyn Stacer,
Denise, Dean & Andrew**



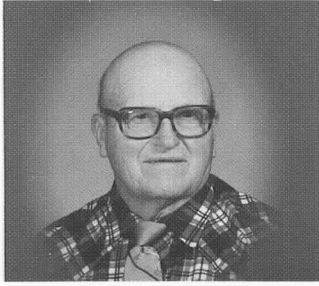
Louise Stacer



Henry & Stella Susalla



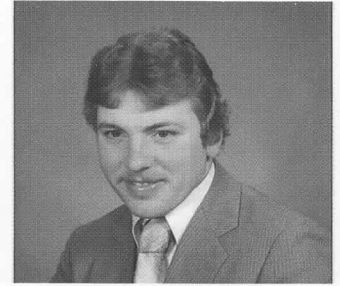
**Russell & Joann Talaski,
Russell & Victoria**



Allen Tenbusch



**Jerome & Eileen Volmering,
Leslie & Douglas**



Richard Volmering



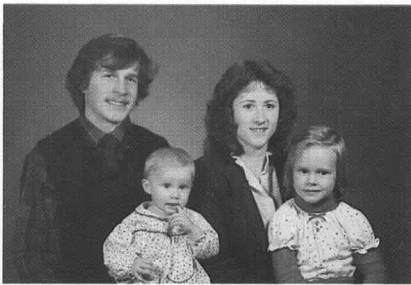
Irving & Genevieve Winkel



**Robert & Jean Winkel,
Kimberly, Janelle, Robert & Jodi**



**Ben & Evangeline Wolschleger,
Beverly, Dean & Darrin**

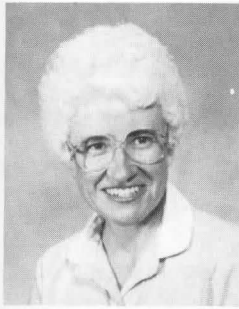


**Daryl & Linda Wolschleger,
DeAnna & Kaylee**



Kristie & Michelle Wolschleger

THOSE NOT AVAILABLE FOR PICTURES



Sister Evelyn Booms



Sister Harriet Booms



Sister Jean Booms



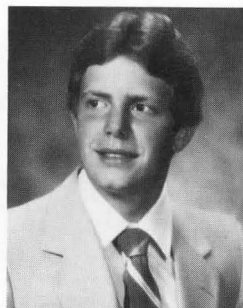
Laura Booms



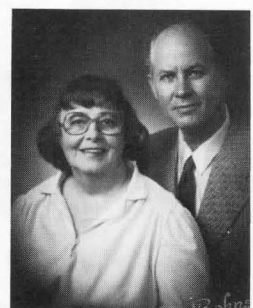
Marie Holdwick



Jean Kramer



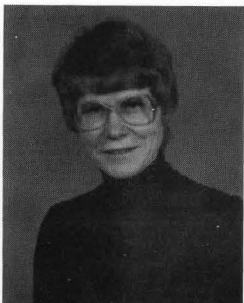
Kevin Kramer



James & Ula Rae Messing



Harold & Betty O'Neil



Sister Margaret Ann Roggenbuck



Sister Patricia Siemen



Ralph & Ernestine Volmering

ROSTER**A**

AMEY, Donald & Sharon
 Christoher & Jennifer
 8284 Helena Rd.
 Harbor Beach, MI 48441
 479-6881

B

BISCHER, Charles & Doris
 Lloyd & Daniel
 3151 N. Ruth Rd.
 Ruth, MI 48470
 479-6422

BISCHER, Daniel
 3151 N. Ruth Rd.
 Ruth, MI 48470
 479-6422

BISCHER, Lloyd
 3151 N. Ruth Rd.
 Ruth, MI 48470
 479-6422

BISCHER, Melvin & Janet
 Phillip, Pauline & Nancy
 6121 Purdy Rd.
 Ruth, MI 48470
 479-6937

BOOMS, Allen & Dorothy
 Catherine, Shirley, Sister Harriet,
 Stella, Margaret & Audrey
 Toppin Rd.
 Harbor Beach, MI 48441
 479-6631

BOOMS, Anthony
 101 N. Finkle Rd.
 Harbor Beach, MI 48441
 479-6317

BOOMS, Arthur
 Rita, Alice, Earl, Ray, Carl,
 Jane & Violet
 8285 Helena Rd.
 Harbor Beach, MI 48441
 479-6176

BOOMS, Benedict & Judy
 1238 Eppenbrock Rd.
 Harbor Beach, MI 48441
 479-6466

BOOMS, Carl & Marjorie
 Kevin, Karen & Kurt
 2330 Buhl Rd.
 Harbor Beach, MI 48441
 479-6197

BOOMS, Carol
 8551 Toppin Rd.
 Harbor Beach, MI 48441
 479-9051

BOOMS, Dale
 8551 Toppin Rd.
 Harbor Beach, MI 48441
 479-9051

BOOMS, Daniel & Marge
 Daniel, Sally, Gary, Scott,
 Rick & Sandy
 7711 Toppin Rd.
 Harbor Beach, MI 48441
 479-6645

BOOMS, Earl & Beatrice
 Marion, Benedict, Edward, Anthony,
 Connie, Lois, Phyllis, Deanna
 & Paula
 101 N. Finkle Rd.
 Harbor Beach, MI 48441
 479-6317

BOOMS, Edward
 101 N. Finkle Rd.
 Harbor Beach, MI 48441
 479-6317

BOOMS, Gene & Emily
 Nadine, Janette, Eric & Leah
 2051 Ruth Rd.
 Harbor Beach, MI 48441
 479-6758

BOOMS, Gregory
 8551 Toppin Rd.
 Harbor Beach, MI 48441
 479-9051

BOOMS, Harry & Verna
 Holly, Matthew, Rebecca & Darryl
 2267 Buhl Rd.
 Harbor Beach, MI 48441
 479-6337

BOOMS, Kevin
 2330 Buhl Rd.
 Harbor Beach, MI 48441
 479-6197

BOOMS, Mrs. Laura
 Kenneth, James, Barbara, Marilyn,
 Charolette, Clarice, Albert,
 Matilda, Gene, Romona, Warren
 & Robert
 7521 Purdy Rd.
 Harbor Beach, MI 48441
 479-9534

BOOMS, Leonard & Rita
 Ronald, Richard, Sandra, Nancy,
 Janice, Larry, Wallace, John,
 Glenn, Wayne, Tim, Perry, Terry,
 & Cheryl
 2806 Eppenbrock Rd.
 Harbor Beach, MI 48441
 479-6831

BOOMS, Leroy & Helen
 Marvin, Sister Jean, Donna,
 Eileen, Sharon, Michael,
 Paul & Lloyd
 8040 Toppin Rd.
 Harbor Beach, MI 48441
 479-6507

BOOMS, Lois
 101 N. Finkle Rd.
 Harbor Beach, MI 48441
 479-6317

BOOMS, Marvin & Virginia
 Russell, Gregory, Dale, Roy
 & Carol
 8551 Toppin Rd.
 Harbor Beach, MI 48441
 479-9051

BOOMS, Paul & Shirley
 Julie, Jeff, Jill, Janice
 & John
 7921 Toppin Rd.
 Harbor Beach, MI 48441
 479-6193

BOOMS, Ronald & Pauline
 Julie, Kathy, George & Harvey
 2260 S. Parisville Rd.
 Ruth, MI 48470
 479-6358

BOOMS, Roy
 8551 Toppin Rd.
 Harbor Beach, MI 48441
 479-9051

BOOMS, Russell
 8551 Toppin Rd.
 Harbor Beach, MI 48441
 479-9051

BOOMS, Wilfred & Estella
 Margie, Gerald, Joann, Charles
 Sister Evelyn, Sheila, Dennis
 & Harry
 8050 Toppin Rd.
 Harbor Beach, MI 48441
 479-6668

BRAUN, Orville & Patricia
 Margie, Jean & Mary
 7940 Toppin Rd.
 Harbor Beach, MI 48441
 479-6598

C

CONQUERGOOD, Delbert & Gloria
 Richard, Marci & Wade
 8960 Helena Rd.
 Harbor Beach, MI 48441
 479-6511

E

EMMING, Robert & Arlene
Mary, Joann, David, Dean & Dale
7999 Lakeshore Rd.
Harbor Beach, MI 48441
864-3175

ENDRES, Larry
9120 Helena Rd.
Harbor Beach, MI 48441
479-9486

ENDRES, Walter & Bernice
Sharon, Gary, Linda, Gail & Larry
9120 Helena Rd.
Harbor Beach, MI 48441
479-9486

ESSENMACHER, George & Agnes
John, Julie, Bruce, Virginia,
George, James, Shirley, Janet
& Steven
22 Purdy Rd.
Harbor Beach, MI 48441
479-6898

G

GEIGER, Daniel
1605 S. Finkle Rd.
Harbor Beach, MI 48441
479-6727

GEIGER, George & Selma
Larry, Jean, James, Arlene,
Cheryl, Daniel & Barbara
1605 S. Finkle Rd.
Harbor Beach, MI 48441
479-6727

GEIGER, Leo & Lucille
Dorothy, Ray, Marjorie, Sharon,
Anna Marie, Gerald & Carol
Ruth Road
Harbor Beach, MI 48441
479-6479

GENIS, Ronald & Doreen
Robert, Rebecca & Ryan
8559 Helena Rd.
Harbor Beach, MI 48441
479-9377

H

HESSLING, Elmer
Austin, Donna, Richard, Warren,
Mark, James, Kevin, Bridget
& Steven
6954 Helena Rd.
Harbor Beach, MI 48441
479-6209

HESSLING, Kevin & Louise
Chad, Jordan & Nicole
78 Helena Rd.
Harbor Beach, MI 48441
479-9260

HESSLING, Richard & Nancy
Jill, Karen, Beth & Eric
7172 Helena Rd.
Harbor Beach, MI 48441
479-6873

HESSLING, Steven
6954 Helena Rd.
Harbor Beach, MI 48441
479-6209

HOLDWICK, Beatrice
1768 Eppenbrock Rd.
Harbor Beach, MI 48441
479-6704

HOLDWICK, Edward & Marie
Laura, Suzanne, Julie, Todd,
Bridget & Chad
9702 Helena Rd.
Harbor Beach, MI 48441
479-6398

HOLDWICK, Erwin & Dorothy
Wendy & Paula
1205 Schock Rd.
Harbor Beach, MI 48441
479-9188

HOLDWICK, Gene
1980 Eppenbrock Rd.
Harbor Beach, MI 48441
479-9041

HOLDWICK, Harry
1768 Eppenbrock Rd.
Harbor Beach, MI 48441
479-6704

HOLDWICK, James
1768 Eppenbrock Rd.
Harbor Beach, MI 48441
479-6704

HOLDWICK, Larry & Frances
Scott & Sara
1747 Eppenbrock Rd.
Harbor Beach, MI 48441
479-9385

HOLDWICK, Laura
9702 Helena Rd.
Harbor Beach, MI 48441
479-6398

HOLDWICK, Margaret
1768 Eppenbrock Rd.
Harbor Beach, MI 48441
479-6704

HOLDWICK, Marie
2563 Buhl Rd.
Harbor Beach, MI 48441
479-6389

HOLDWICK, Mrs. Marie
Marilyn, Lloyd, Ronald, Larry,
Herbert, David, Michael & Janice
1739 Eppenbrock Rd.
Harbor Beach, MI 48441
479-6826

HOLDWICK, Norman
8222 Helena Rd.
Harbor Beach, MI 48441

HOLDWICK, Paul & Mary Ann
Corinne, Jeffrey, Connie & Jason
1153 Schock Rd.
Harbor Beach, MI 48441
479-6459

HOLDWICK, Mrs. Stella
Richard, Harold, Arlene, Edward,
William, Linda, Paul, Marjorie,
Erwin, Dennis, Barbara, Gene,
Patricia & Brian
1839 Eppenbrock Rd.
Harbor Beach, MI 48441
479-6641

HOLDWICK, Suzanne
9702 Helena Rd.
Harbor Beach, MI 48441
479-6398

HOLDWICK, William & Audrey
Tammy, Eric, Kevin, Greg & Keith
7865 Toppin Rd.
Harbor Beach, MI 48441
479-6893

K

KIRCH, Wilbert & Margaret
Marlene, Delores, Donald,
Kenneth, Joyce & Richard
1875 N. Ruth Rd.
Harbor Beach, MI 48441
479-9579

KRAMER, Claire
2625 Eppenbrock Rd.
Harbor Beach, MI 48441
479-9003

KRAMER, David & Janet
Terry, Glenn, Kevin & Darrin
2208 Eppenbrock Rd.
Harbor Beach, MI 48441
479-6801

KRAMER, James & Stella
Claire, Paul, Jean, Sharon
& Michael
2625 Eppenbrock Rd.
Harbor Beach, MI 48441
479-6821

KRAMER, Jean
2625 Eppenbrock Rd.
Harbor Beach, MI 48441
479-6821

KRAMER, Kevin
2208 Eppenbrock Rd.
Harbor Beach, MI 48441
479-6801

KRAMER, Marvin & Janet
Tammy, Paul, Renee, Deborah,
Rebecca & Joseph
4242 Edwards Rd.
Harbor Beach, MI 48441
864-3674

KRAMER, Melvin
2477 Eppenbrock Rd.
Harbor Beach, MI 48441
479-6811

KRAMER, Paul
2625 Eppenbrock Rd.
Harbor Beach, MI 48441
479-6821

KRAMER, Raymond & Stella
David, James, Melvin, Harvey,
Silvia, Pauline & Carla
2477 Eppenbrock Rd.
Harbor Beach, MI 48441
479-6811

KRANZ, Colleen
Schock Road
Harbor Beach, MI 48441
479-6322

KRANZ, Dennis & Mary Lou
2982 Schock Rd.
Harbor Beach, MI 48441
479-6492

KRANZ, Edward & Agnes
Janet, Ronald, Richard & Raymond
3085 Klug Rd.
Harbor Beach, MI 48441
479-6746

KRANZ, Lawrence & Dolores
Lajuana, Debra, Gary, Glen,
Gerald, Colleen & Greg,
Schock Road
Harbor Beach, MI 48441
479-6322

L

LAEDER, Neal & Nancy
Alicia
397 S. Finkle Rd.
Harbor Beach, MI 48441
479-6013

LEARMAN, Arthur & Evelyn
Marie, Theresa, John, Edward & Fred
8801 Helena Rd.
Harbor Beach, MI 48441
479-6650

LEARMAN, John & Ilene
Maryjo, Nancy, Paul, Gary, JaNice,
James, Deanna, John, Rick, Renee,
Sandra & Matthew
8828 Helena Rd.
Harbor Beach, MI 48441
479-6248

LEMANSKI, Mrs. Susie
Clarence, Daniel, Wayne, Virginia,
Delores & Suzanne
1610 Buhl Rd.
Harbor Beach, MI 48441
479-6348

M

MAUSOLF, Earl & Frances
Rosaline, Joe, Kathy, Marilyn,
James, John, Margaret & Jerry
8377 Helena Rd.
Harbor Beach, MI 48441
479-6498

MAUSOLF, Harvey & Roxanne
Tonya, Katherine, Melissa
& Kristopher
8761 Purdy Rd.
Harbor Beach, MI 48441
479-6155

MAUSOLF, James & Linda
Angeline & Sara
8534 Helena Rd.
Harbor Beach, MI 48441
479-6628

MAUSOLF, Jerome & Alice
Maryann, Joann, William,
Theresa, Roy & Gloria
9204 Helena Rd.
Harbor Beach, MI 48441
479-6136

MAUSOLF, Mrs. Leolla
Ervin, Jr.
2991 Klug Rd.
Harbor Beach, MI 48441
479-6269

MAUSOLF, Paul
2120 Klug Rd.
Harbor Beach, MI 48441
479-6126

MAUSOLF, Robert & Betty
Tom, Harvey, Joyce, Karen,
Lynn, Roger, Paul & Julie
2120 Klug Rd.
Harbor Beach, MI 48441
479-6126

MAUSOLF, Wayne & Mary
Erinn
8252 Helena Rd.
Harbor Beach, MI 48441
479-9520

MAUSOLF, William & Deanna
Daniel, Michael & Tracy
9776 McIntosh Rd.
Harbor Beach, MI 48441
479-9458

MESSING, Bernard & Rosaline
Richard, Fred, Tom & Mike
3621 Klug Rd.
Harbor Beach, MI 48441
479-6166

MESSING, James & UlaRae
Larry, Renee & Elaine
8904 Helena Rd.
Harbor Beach, MI 48441
479-6424

MESSING, Mrs. Laurretta
Melvin & Janet
2943 Buhl Rd.
Harbor Beach, MI 48441
479-6528

MESSING, Robert & Catherine
Pat, Marvin & Dennis
Priemer Rd.
Ruth, MI 48470
479-6694

O

O'NEIL, Harold & Betty
Patricia, Susan, Terri, Lynn,
Ted & Joe
7538 Toppin Rd.
Harbor Beach, MI 48441
479-6506

P

PERUSKI, Stanley & Rose
Arlene, David & Marvin
8888 Helena Rd.
Harbor Beach, MI 48441
479-9570

PRIEMER, Joseph & June
Cindy, Crystal, Tom & Eric
8301 Priemer Rd.
Harbor Beach, MI 48441
479-6993

R

ROGGENBUCK, Barthol & Geraldine
Karen, George & Mark
3297 Klug Rd.
Harbor Beach, MI 48441
479-6241

ROGGENBUCK, Brian
2141 Klug Rd.
Harbor Beach, MI 48441
479-6519

ROGGENBUCK, Mrs. Clara
Edna, Charles, Vincent, Monica,
Orville, Rebecca, Carl, Earl,
Glenn, Harry, Lulu & Anita
8291 Helena Rd.
Harbor Beach, MI 48441
479-6449

ROGGENBUCK, Dean
2141 Klug Rd.
Harbor Beach, MI 48441
479-6519

ROGGENBUCK, Mrs. Dorothy
Audrey, Don, Herb, Dennis,
Duane, Terry & Lynn
8490 Helena Rd.
Harbor Beach, MI 48441
479-9088

ROGGENBUCK, Duane & Mariann
Rebecca & Jeremy
8380 Helena Rd.
Harbor Beach, MI 48441
479-6339

ROGGENBUCK, Gary
6701 Sand Beach Rd.
Harbor Beach, MI 48441
479-6473

ROGGENBUCK, George & Charlene
8655 Priemer Rd.
Harbor Beach, MI 48441
479-6123

ROGGENBUCK, Glenn & Barbara
Carmen, Greg, Pamela & Paulette
8417 Toppin Rd.
Harbor Beach, MI 48441
479-9086

ROGGENBUCK, Harry & Rochelle
Brian, Scott, Dean, Renee & Leon
2141 Klug Rd.
Harbor Beach, MI 48441
479-6519

ROGGENBUCK, Jill
3225 Buhl Rd.
Harbor Beach, MI 48441
479-6538

ROGGENBUCK, Joan
3225 Buhl Rd.
Harbor Beach, MI 48441
479-6538

ROGGENBUCK, John & Linda
Laura, Lisa, Michelle, Marcy,
Paul, Rhonda, Timothy & Andrew
2556 Buhl Rd.
Harbor Beach, MI 48441
479-6158

ROGGENBUCK, Mrs. Magdalene
William, Barthol, Mary June,
Sister Mrgaret Ann, Robert,
Ronald, Evelyn, Gerald, Michael,
John, Joe & Jean
2563 Buhl Rd.
Harbor Beach, MI 48441
479-6389

ROGGENBUCK, Mark
3297 Klug Rd.
Harbor Beach, MI 48441
479-6241

ROGGENBUCK, Michael & Patricia
Pauline, David, Douglas,
Diane & James
8015 Helena Rd.
Harbor Beach, MI 48441
479-6153

ROGGENBUCK, Neal
3225 Buhl Rd.
Harbor Beach, MI 48441
479-6538

ROGGENBUCK, Pauline
8015 Helena Rd.
Harbor Beach, MI 48441
479-6153

ROGGENBUCK, Robert & Linda
Susan, Sharon, Joan, Neil,
Jill, Debra & Erica
3225 Buhl Rd.
Harbor Beach, MI 48441
479-6538

ROGGENBUCK, Ronald
2563 Buhl Rd.
Harbor Beach, MI 48441
479-6389

ROGGENBUCK, Scott & Cindy
Aaron
8579 Helena Rd.
Harbor Beach, MI 48441
479-6854

ROGGENBUCK, Sharon
3225 Buhl Rd.
Harbor Beach, MI 48441
479-6538

ROGGENBUCK, Susan
3225 Buhl Rd.
Harbor Beach, MI 48441
479-6538

ROGGENBUCK, Terry & Bernadette
Ryan & Andrea
2026 S. Ruth Rd.
Harbor Beach, MI 48441
479-6902

ROGGENBUCK, William & Rosemary
Dan, Nancy, Donna, Larry, Janice,
Gary, Betsy, Jean, Carrie,
Cheri & Randy
6701 Sand Beach Rd.
Harbor Beach, MI 48441
479-6473

S

SCHROEDER, Dennis
2788 Buhl Rd.
Harbor Beach, MI 48441
479-6438

SCHROEDER, Elmer & Dorothy
Dorris, Richard & Dennis
2788 Buhl Rd.
Harbor Beach, MI 48441
479-6438

SIEMEN, Bernard & Beatrice
Janet, Marjorie, Nancy, Joyce
& Betty
2285 Schock Rd.
Harbor Beach, MI 48441
479-6342

SIEMEN, Corrina
1529 Eppenbrock Rd.
Harbor Beach, MI 48441
479-6666

SIEMEN, Dale
1697 Eppenbrock Rd.
Harbor Beach, MI 48441
479-6501

SIEMEN, Gregory
1529 Eppenbrock Rd.
Harbor Beach, MI 48441
479-6666

SIEMEN, James & Lillian
Julie, Brian & Kurt
2600 Schock Rd.
Harbor Beach, MI 48441
479-6946

SIEM
1697
Harb
479-

SIEM
1529
Harb
479-

SIEM
Shelly
Maryl
7442
Harbo
479-6

SIEM
Wayne
Ruth
Harbo

SIEME
1529
Harbo
479-6

SIEME
1697
Harbo
479-6

SIEME
Diane,
Richar
Jeanne
1697
Harbor
479-65

SIEMEN
Stephan
Joseph
1529
Harbor
479-666

STACER
Michele
7805
Harbor
479-625

STACER
3095
Harbor
479-651

STACER,
2943
Harbor
479-652

SIEMEN, Jeannette
1697 Eppenbrock Rd.
Harbor Beach, MI 48441
479-6501

SIEMEN, Joseph
1529 Eppenbrock Rd.
Harbor Beach, MI 48441
479-6666

SIEMEN, Larry & Bonnie
Shelly, Kelly Jo, Darrin, David,
MaryBeth & Melissa
7442 Toppin Rd.
Harbor Beach, MI 48441
479-6783

SIEMEN, Leonard & Catherine
Wayne & Michael
Ruth Road
Harbor Beach, MI 48441

SIEMEN, Mary
1529 Eppenbrock Rd.
Harbor Beach, MI 48441
479-6666

SIEMEN, Richard
1697 Eppenbrock Rd.
Harbor Beach, MI 48441
479-6501

SIEMEN, Robert & Geraldine
Diane, Cindy, Linda, Duane,
Richard, Lori, Beverly, Dale,
Jeannette
1697 Eppenbrock Rd.
Harbor Beach, MI 48441
479-6501

SIEMEN, Ronald & Clarice
Stephanie, Gregory, Corrina, Mary,
Joseph, Matthew & Angela
1529 Eppenbrock Rd.
Harbor Beach, MI 48441
479-6666

STACER, Calvin & Judy
Michele, Paul, Thomas & Scott
7805 Purdy Rd.
Harbor Beach, MI 48441
479-6252

STACER, Denise
3095 Buhl Rd.
Harbor Beach, MI 48441
479-6517

STACER, John
2943 Buhl Rd.
Harbor Beach, MI 48441
479-6528

STACER, Linus & Marilyn
Denise, Dean & Andrew
3095 Buhl Rd.
Harbor Beach, MI 48441
479-6517

STACER, Mrs. Louise
Calvin, Jean, Phyllis, Thelma
& Dennis
8365 Sand Beach Rd.
Harbor Beach, MI 48441
479-6361

SUSALLA, Henry & Stella
Alice & Nancy
2774 Edwards Rd.
Harbor Beach, MI 48441
479-9273

T

TALASKI, Russell & Joann
Russell & Victoria
8300 Purdy Rd.
Harbor Beach, MI 48441
479-3624

TENBUSCH, Allen
Allen, Jr., Floyd, Russell,
Michael & Marcella
2836 S. Ruth Rd.
Harbor Beach, MI 48441
479-6418

TENBUSCH, Floyd & June
Paula, Diane & Floyd, Jr.
2696 S. Ruth Rd.
Harbor Beach, MI 48441
479-6014

TENBUSCH, Floyd, Jr.
2696 S. Ruth Rd.
Harbor Beach, MI 48441
479-6014

TEVES, Dr. Manual & Patricia
Colleen, Karen, Patricia
& Jacqueline
3005 N. Lakeshore Rd.
Harbor Beach, MI 48441
479-6707

V

VOGEL, Raymond
Klug Rd.
Harbor Beach, MI 48441
479-6952

VOLMERING, Jerome & Eileen
William, Richard, Nancy,
Leslie & Douglas
8850 Purdy Rd.
Harbor Beach, MI 48441
479-6474

VOLMERING, Ralph & Ernestine
Priemer Rd.
Harbor Beach, MI 48441
479-9192

VOLMERING, Richard
8850 Purdy Rd.
Harbor Beach, MI 48441
479-6474

W

WINKEL, Irving & Genevieve
Robert, Melvin, Eileen, Shirley
& Gerald
7309 Toppin Rd.
Harbor Beach, MI 48441
479-6644

WINKEL, Robert & Jean
Kimberly, Janelle, Robert & Jodi
7496 Sand Beach Rd.
Harbor Beach, MI 48441
479-6983

WOLSCHLEGER, Benedict & Evangeline
Harvey, Perry, Daryl, Brenda,
Charlene, Gail, Elynn, Rhonda,
Beverly, Dean & Darrin
2232 Schock Rd.
Harbor Beach, MI 48441
479-6432

WOLSCHLEGER, Beverly
2232 Schock Rd.
Harbor Beach, MI 48441
479-6432

WOLSCHLEGER, Daryl & Linda
Deanna & Kaylee
9300 Helena Rd.
Harbor Beach, MI 48441
479-6111

WOLSCHLEGER, Lloyd & Sandra
Kristie & Michelle
8301 Purdy Rd.
Harbor Beach, MI 48441
479-6304

Thank You For The Privilege of Making This Directory

olan mills®
THE NATION'S STUDIO

Church Directory Division
Inquiries Welcomed
Call or Write
Toll Free 1-800-845-1157
Box 21608
Columbia, S.C. 29221

